

Standard Life Centre

10405 Jasper Avenue, Edmonton (AB)

Standard Life Assurance Company, Real Estate Group

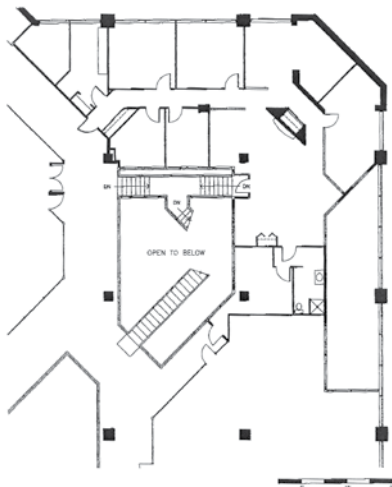
August/September 2011

Orange indicates a new or changed listing



19th Floor	20,808 sq.ft.
18th Floor	20,857 sq.ft.
17th Floor	20,859 sq.ft.
16th Floor	20,871 sq.ft.
15th Floor	20,849 sq.ft.
14th Floor	20,403 sq. ft.
12th Floor	20,634 sq.ft.
11th Floor	20,675 sq.ft.
10th Floor	20,715 sq.ft.
9th Floor	20,689 sq.ft.
8th Floor	20,715 sq.ft.
7th Floor	20,764 sq.ft.
6th Floor	20,801 sq.ft.
5th Floor	18,842 sq.ft.
4th Floor	20,829 sq.ft.
3rd Floor	20,323 sq.ft.
2nd Floor	31,237 sq.ft.
Mezzanine	18,360 sq. ft.
Main Floor	19,255 sq.ft.

Floor plan



Suite M120
2,753 sq. ft. usable, 2,753 sq. ft. rentable

CAD drawings are now available for Standard Life vacancies

Highlights

- 24-hour staffed security and card access system for tenant safety
- Excellent indoor air quality for increased tenant comfort
- State-of-the-art XCHANGE Conference Centre exclusively available to Standard Life tenants
- On-site fitness centre available free of charge to all building tenants

Building Facts

- Total rentable area: 399,927 sq. ft.
- Typical floor plate size: 21,000 sq. ft.
- Retail rentable area: 18,860 sq. ft.
- Parking ratios: Heated, underground – 1/1400 sq.ft. leased
- Parking rates: \$225/month + GST unreserved -subject to change
- HVAC hours: 6:00 a.m. to 6:00 p.m., Monday to Friday
8:00 a.m. to 4:00 p.m., Saturdays
- Operating costs and taxes (2011 estimate): \$15.48

Information: Darrin Geddes, Leasing Manager (780) 944-1152
Darrin.geddes@standardlife.ca
The Standard Life Assurance Company of Canada

www.standardlife.ca

